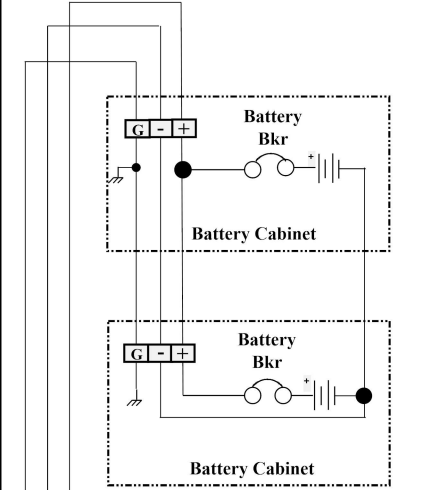
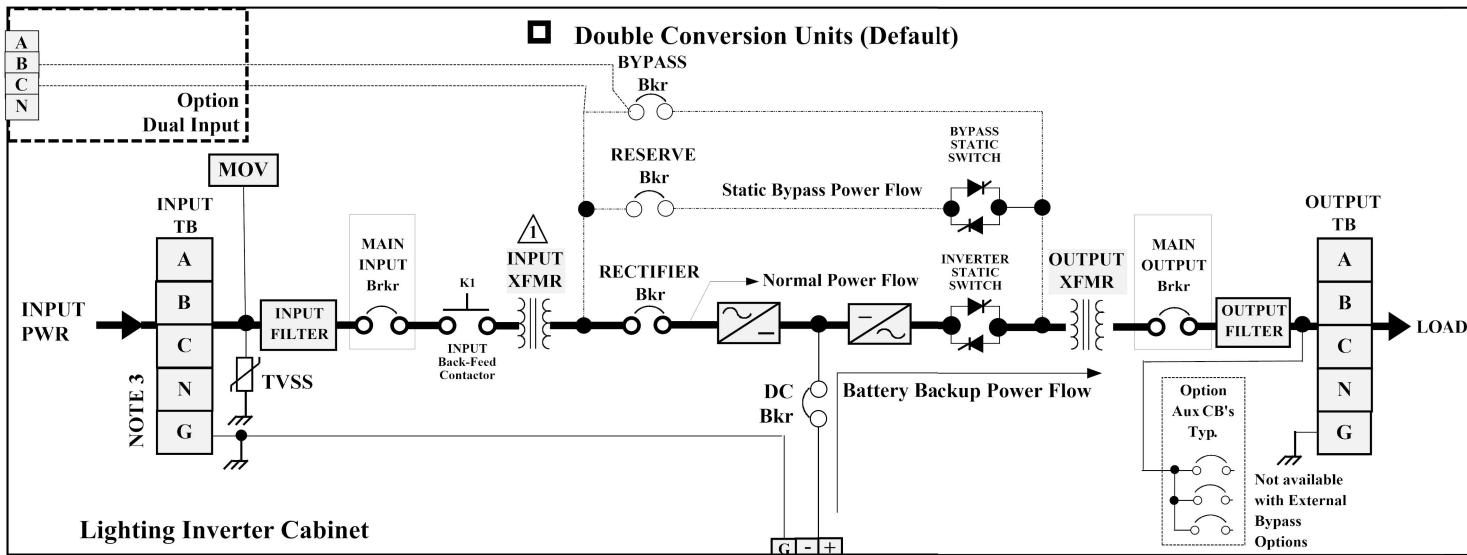
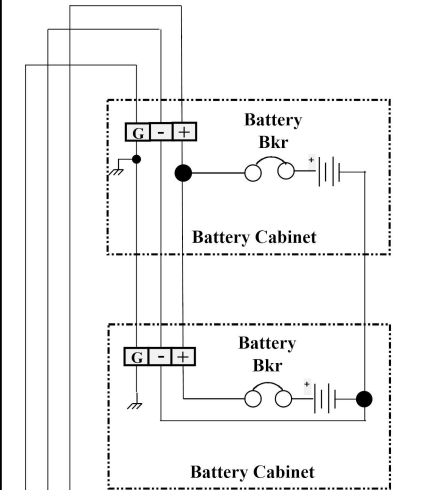
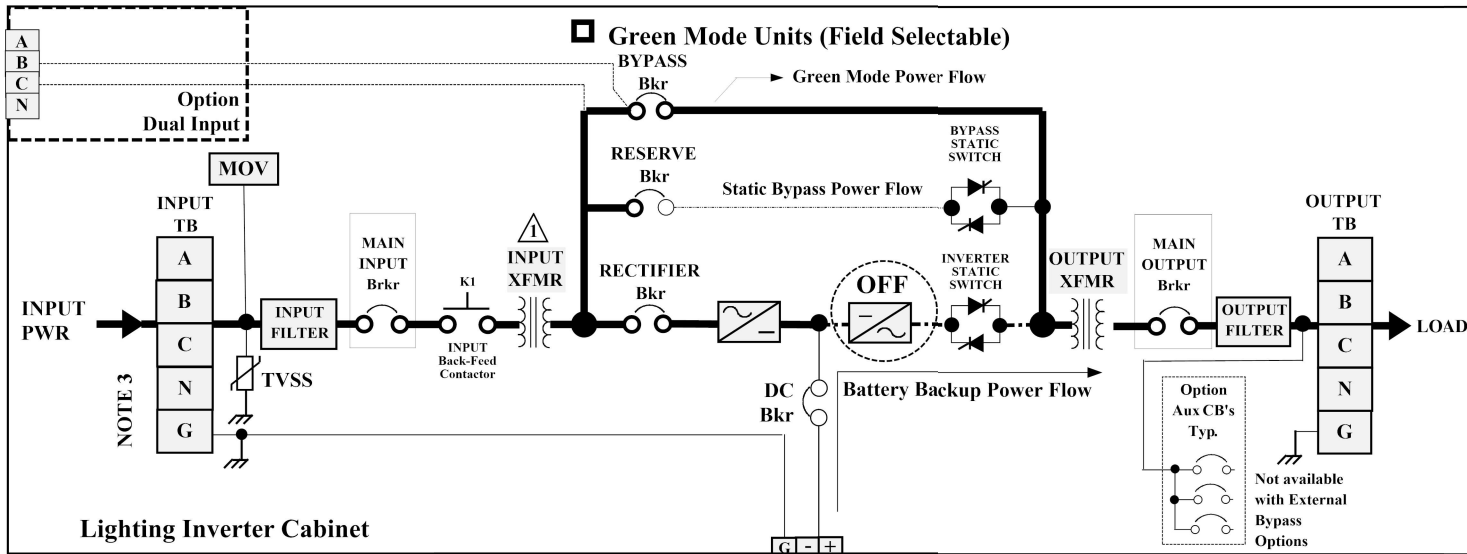


# WAVE RIDER 4 LIGHTING INVERTER TYPICAL SINGLE LINE DIAGRAM

NOTE 3



NOTE 3



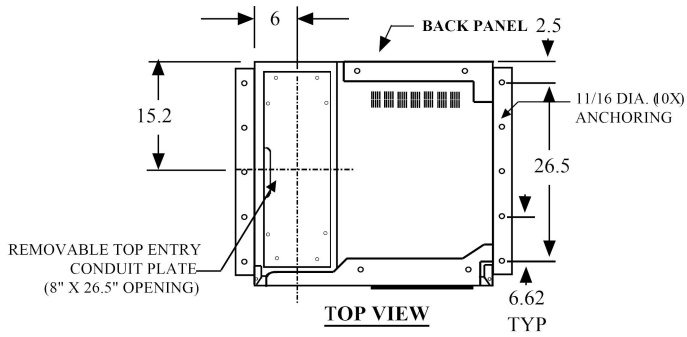
**NOTES:**

1. Bypass and Inverter Static Switches will be powered from the *Input Transformer* for different input and output voltage configurations.
2. Power Flow is through Static Bypass Switch **(WHEN IN GREEN MODE)** during Input Power Drop
3. **Optional Delta Units are available. Neutral not required.**
4. Battery Cabinet Quantity might vary depending on the Battery type.

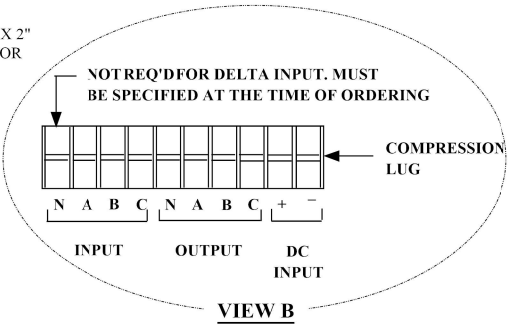
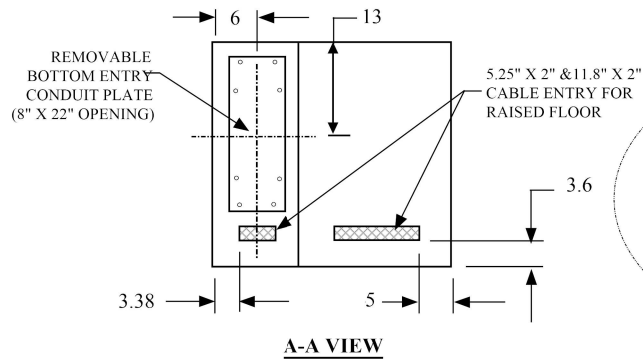
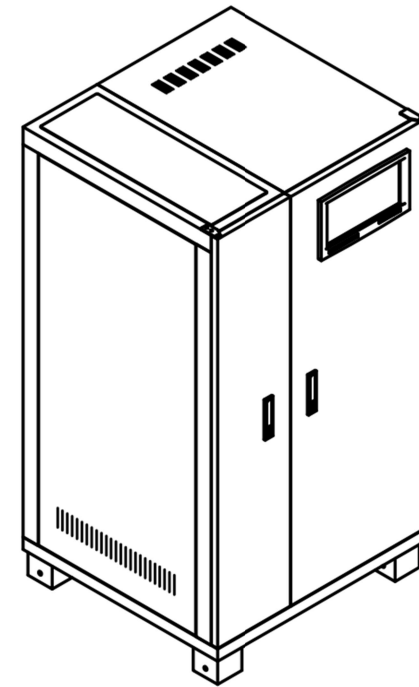
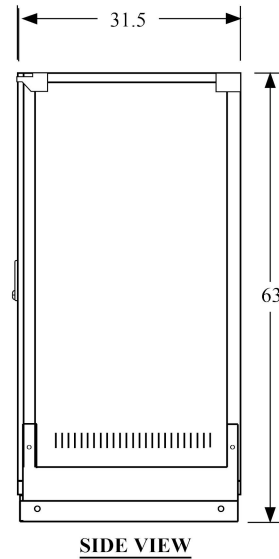
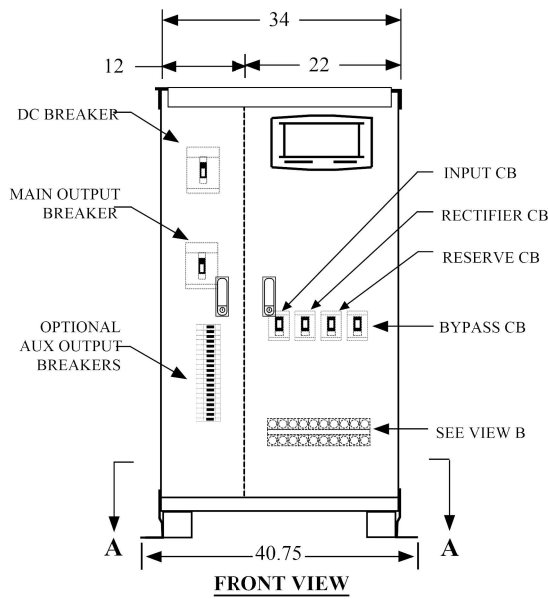
TYPICAL WR4 LIGHTING INVERTER SINGLE LINE DIAGRAM		SHT 1 OF 1
<b>CRUCIAL POWER PRODUCTS</b> SUBJECT TO CHANGE WITHOUT NOTICE		
DRAWN : SS	4/17/24	420-TD-010
APPVD : HN	4/17/24	REV A

**ELECTRONIC  
CABINET ONLY  
(10 KVA THRU 60 KVA)**

**WAVE RIDER 4 INVERTER CABINET  
SHAKER TABLE TEST CERTIFIED BY ( HCAI )**



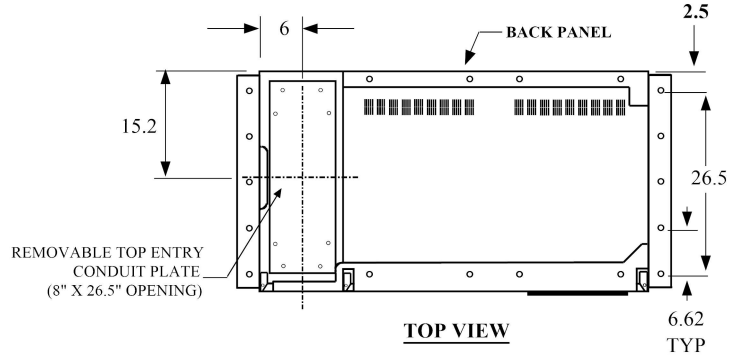
- NOTES:**
- 1) CONSTRUCTION: INDOOR, COLOR BLACK.
  - 2) KNOCKOUTS ON CONDUIT PLATES TO BE DONE BY INSTALLING CONTRACTOR
  - 3) DIMENSIONS ARE IN INCHES



WAVE RIDER 4 SHAKER TABLE TESTED INVERTER CABINET		SHT 1 OF 1	
SUBJECT TO CHANGE WITHOUT NOTICE			
DRAWN :SHERRIS.	04/17/24	420-SV-TD-011	REV A
APPVD: HN	04/17/24		

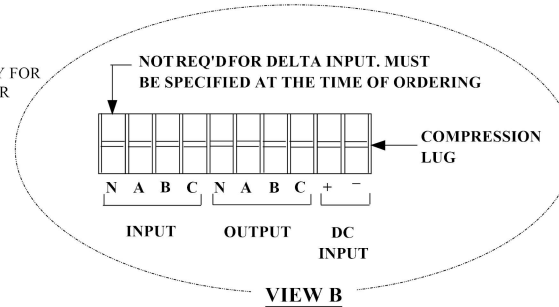
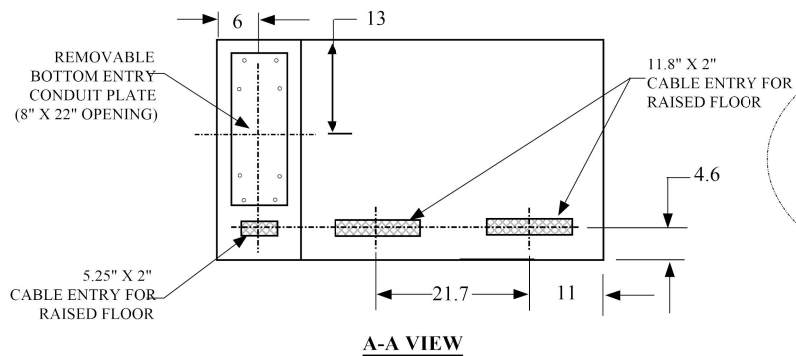
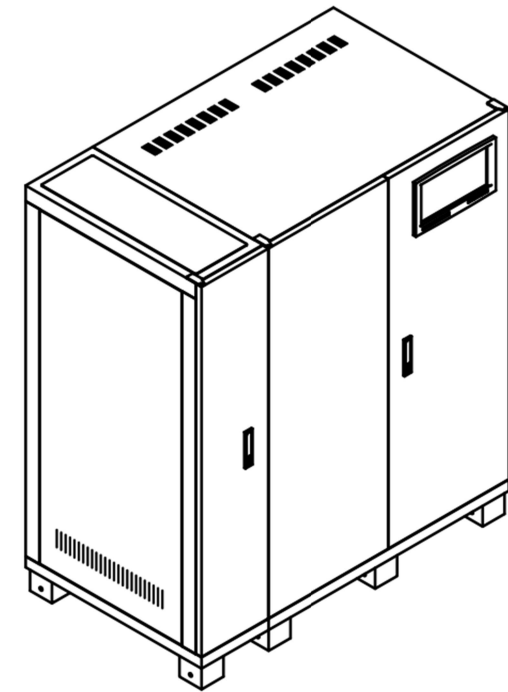
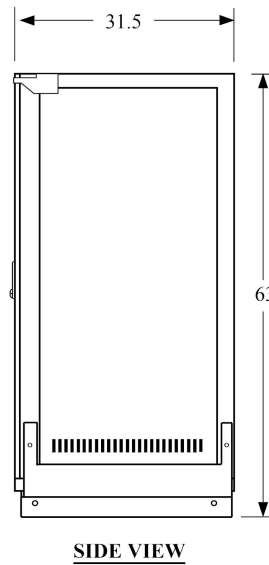
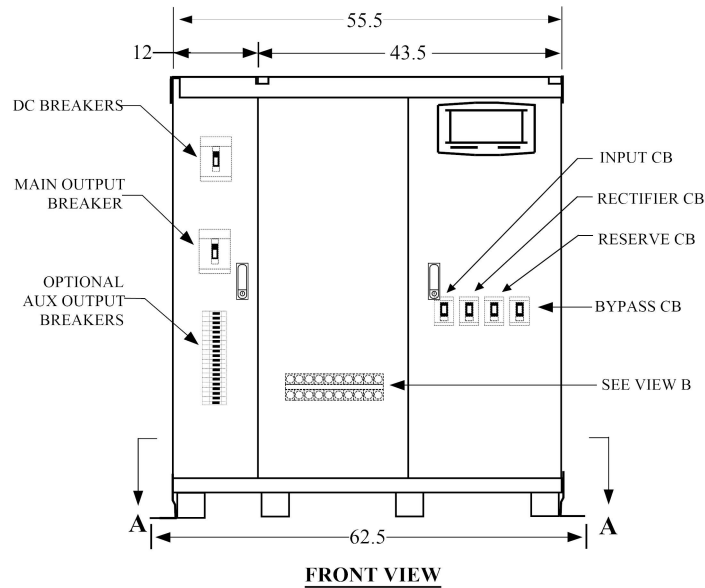
**ELECTRONIC  
CABINET ONLY  
(80 KVA THRU 160 KVA)**

**WAVE RIDER 4 INVERTER CABINET  
SHAKER TABLE TEST CERTIFIED BY ( HCAI )**



**NOTES:**

- 1) CONSTRUCTION: INDOOR, COLOR BLACK.
- 2) KNOCKOUTS ON CONDUIT PLATES TO BE DONE BY INSTALLING CONTRACTOR
- 3) DIMENSIONS ARE IN INCHES

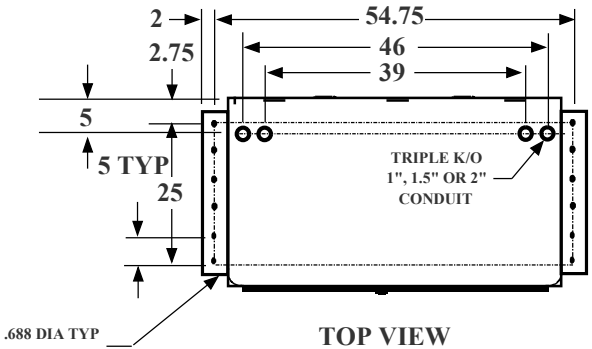


WAVE RIDER 4 SHAKER TABLE TESTED INVERTER CABINET		SHT 1 OF 1
SUBJECT TO CHANGE WITHOUT NOTICE		
DRAWN :SHERRIS.	04/17/24	420-SV-TD-012
APPVD: HN	04/17/24	
		REV A

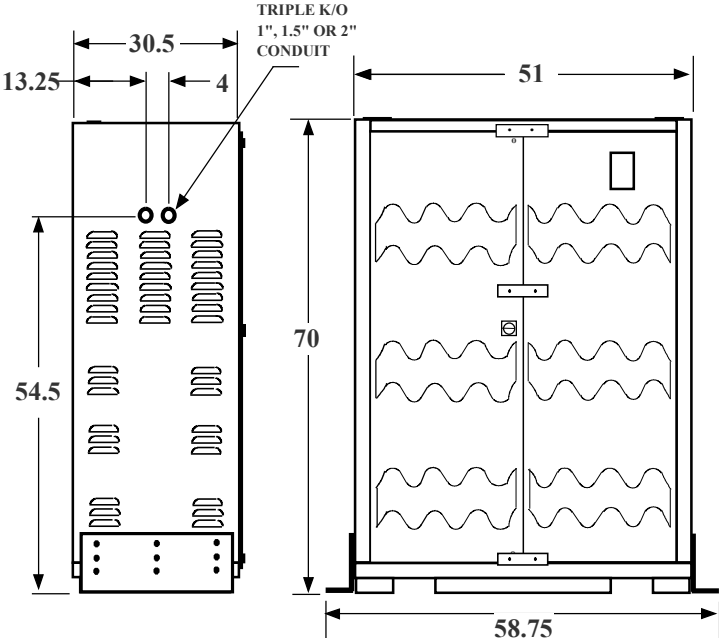
# BATTERY CABINET (10 KVA THRU 60 KVA) STANDARD VRLA BATTERY

SHAKER TABLE TEST CERTIFIED BY ( HCAI )

## RECOMMENDED SYSTEM LAYOUT

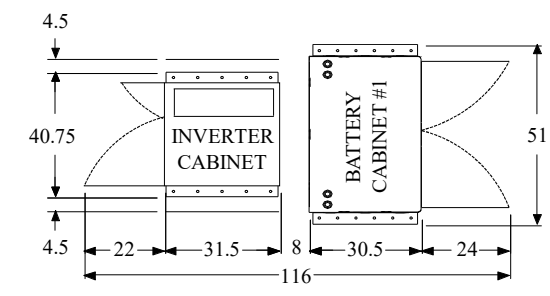
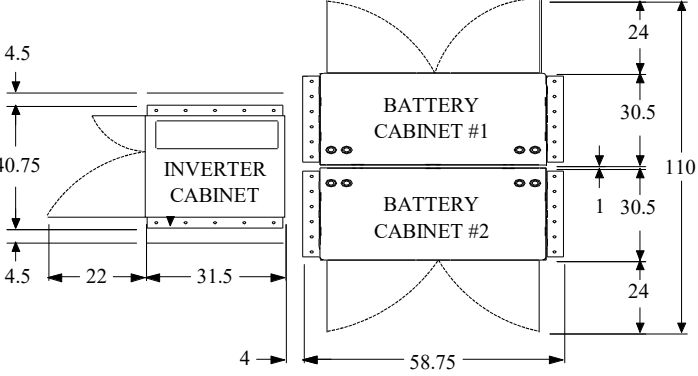
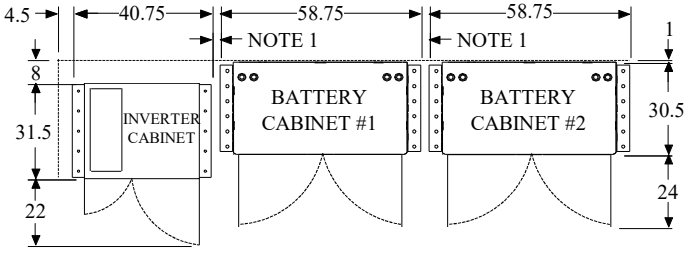


**TOP VIEW**



**LEFT VIEW**

**FRONT VIEW**



STANDARD VRLA BATTERY		
KVA/KW	BATTERY CABINET QTY 90 MIN.	BATTERY CABINET QTY 120 MIN.
10KVA/8KW	1	1
20KVA/16KW	1	1
30KVA/24KW	1	1
40KVA/32KW	2	2
50KVA/40KW	2	2
60KVA/48KW	2	2

**NOTES:**

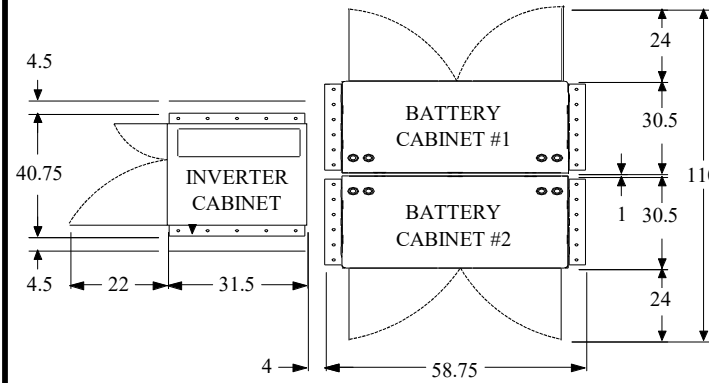
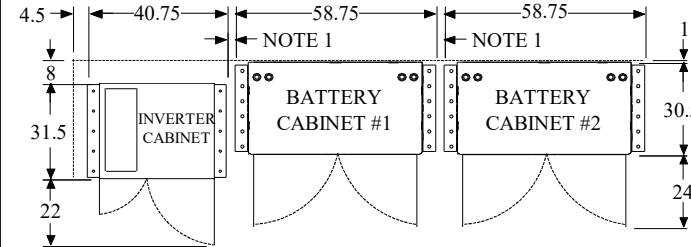
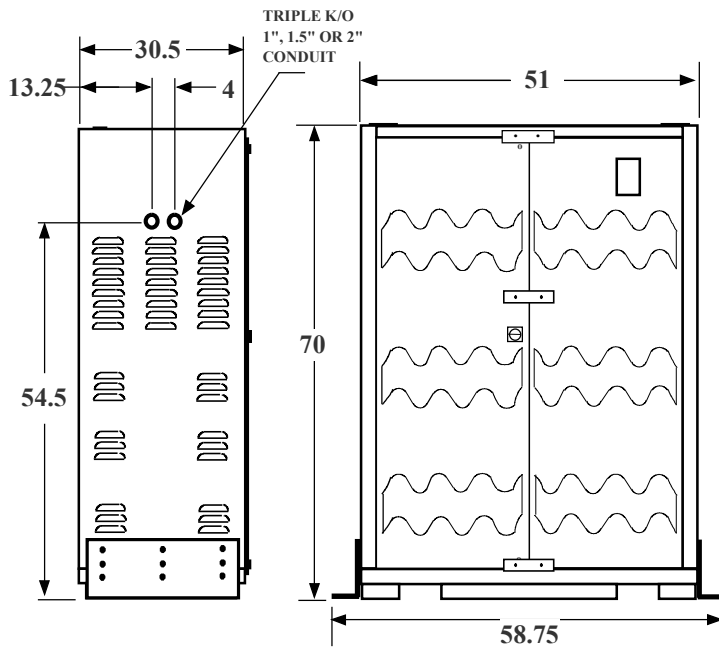
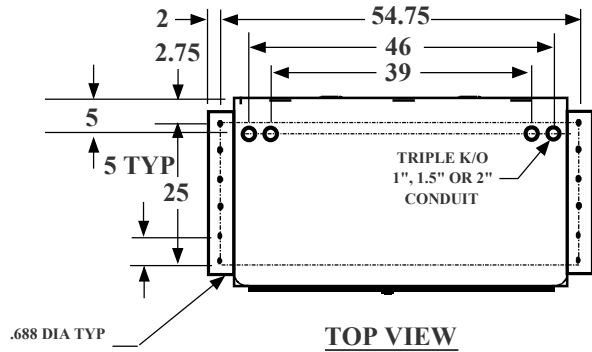
- 1) SPACING IS OPTIONAL NOT REQUIRED BY MFR.
- 2) CONSTRUCTION: NEMA1 INDOOR.
- 3) DIMENSIONS ARE IN INCHES.

WAVE RIDER 4 SHAKER TABLE TESTED BATTERY CABINET (51" WIDE)		SHT 1 OF 1
<span style="font-weight: bold;">CRUCIAL POWER PRODUCTS</span> SUBJECT TO CHANGE WITHOUT NOTICE		
DRAWN : SHERRIS.	4/17/24	420-SV-TD-013
APPVD: HN	4/17/24	REV A

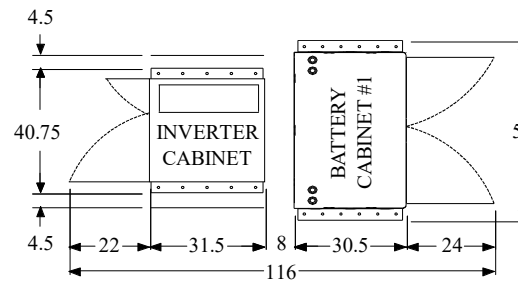
# BATTERY CABINET (10 KVA THRU 60 KVA) LONG LIFE BATTERY

SHAKER TABLE TEST CERTIFIED BY ( HCAI )

## RECOMMENDED SYSTEM LAYOUT



LONG LIFE BATTERY		
KVA/KW	BATTERY CABINET QTY 90 MIN.	BATTERY CABINET QTY 120 MIN.
10KVA/8KW	1	1
20KVA/16KW	1	1
30KVA/24KW	1	1
40KVA/32KW	1	2
50KVA/40KW	2	2
60KVA/48KW	2	2



**NOTES:**

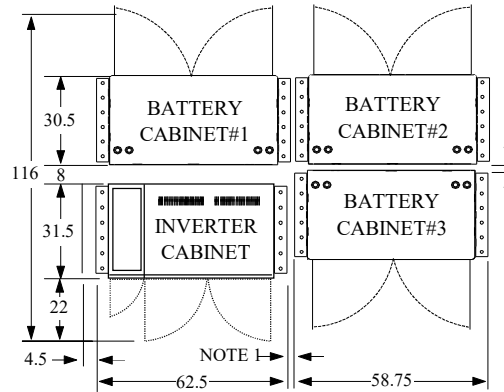
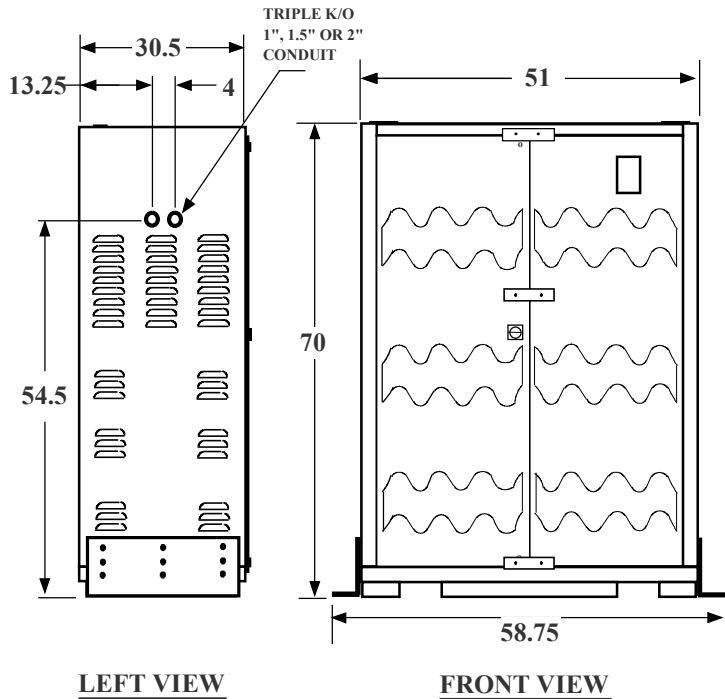
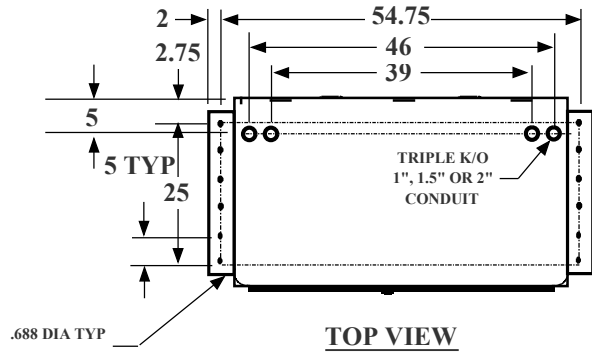
- 1) SPACING IS OPTIONAL NOT REQUIRED BY MFR.
- 2) CONSTRUCTION: NEMA1 INDOOR.
- 3) DIMENSIONS ARE IN INCHES.

WAVE RIDER 4 SHAKER TABLE TESTED BATTERY CABINET (51" WIDE)		SHT 1 OF 1
<span style="font-weight: bold;">CRUCIAL POWER PRODUCTS</span> <small>SUBJECT TO CHANGE WITHOUT NOTICE</small>		
DRAWN : SHERRIS.	4/17/24	420-SV-TD-014
APPVD : HN	4/17/24	REV A

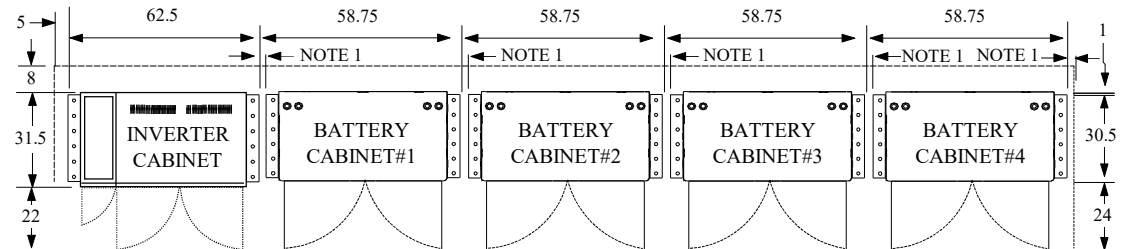
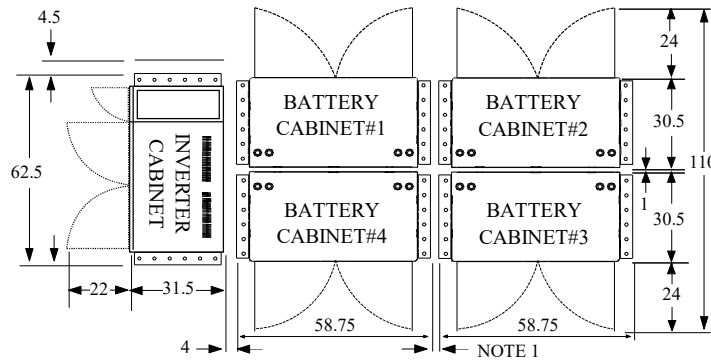
# BATTERY CABINET (80 KVA THRU 160 KVA) STANDARD VRLA BATTERY

SHAKER TABLE TEST CERTIFIED BY ( HCAI )

## RECOMMENDED SYSTEM LAYOUT



STANDARD VRLA BATTERY		
KVA/KW	BATTERY CABINET QTY 90 MIN.	BATTERY CABINET QTY 120 MIN.
80KVA/64KW	2	3
100KVA/80KW	3	4
120KVA/96KW	4	4
160KVA/128KW	LONG LIFE BATTERY ONLY	LONG LIFE BATTERY ONLY



**NOTES:**

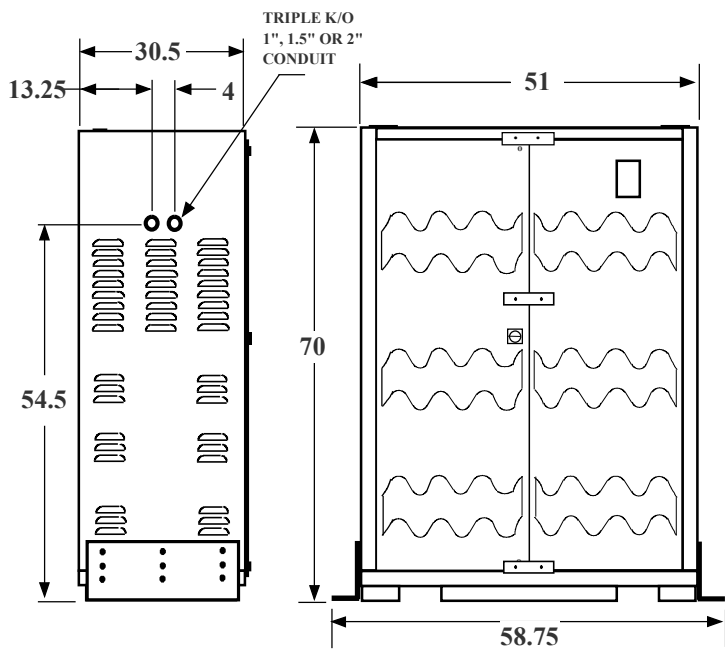
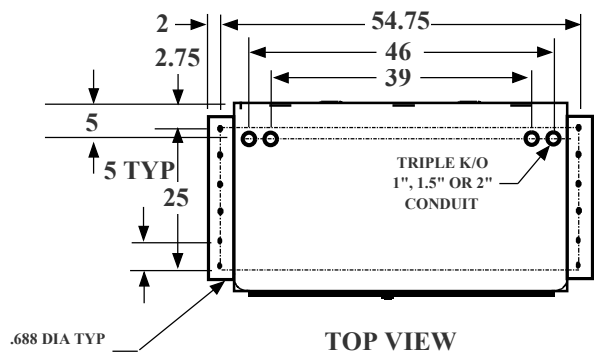
- 1) SPACING IS OPTIONAL NOT REQUIRED BY MFR.
- 2) CONSTRUCTION: NEMA1 INDOOR.
- 3) DIMENSIONS ARE IN INCHES.

WAVE RIDER 4 SHAKER TABLE TESTED BATTERY CABINET (51" WIDE)		SHT 1 OF 1
SUBJECT TO CHANGE WITHOUT NOTICE		
DRAWN : SHERRIS.	4/17/24	420-SV-TD-015
APPVD : HN	4/17/24	
		REV A

# BATTERY CABINET (80 KVA THRU 160 KVA) LONG LIFE BATTERY

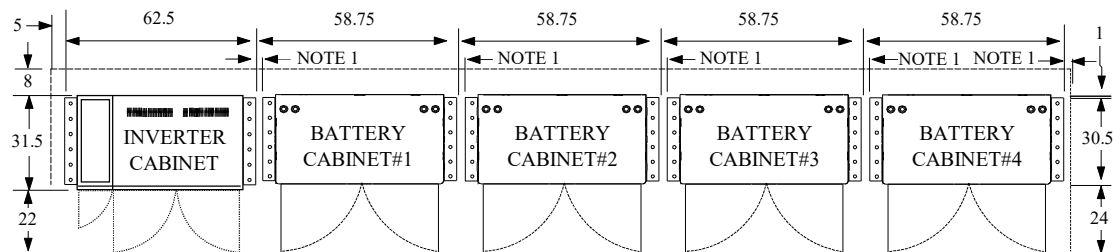
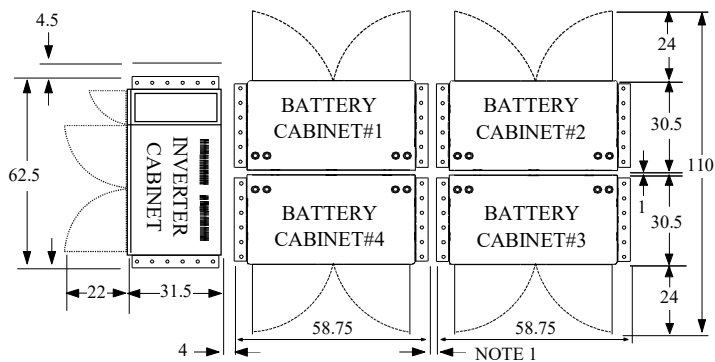
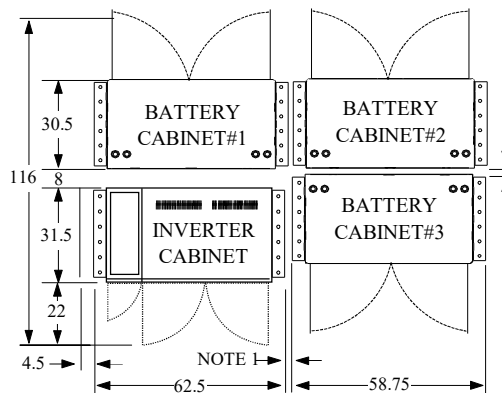
SHAKER TABLE TEST CERTIFIED BY ( HCAI )

## RECOMMENDED SYSTEM LAYOUT



**LEFT VIEW**

**FRONT VIEW**



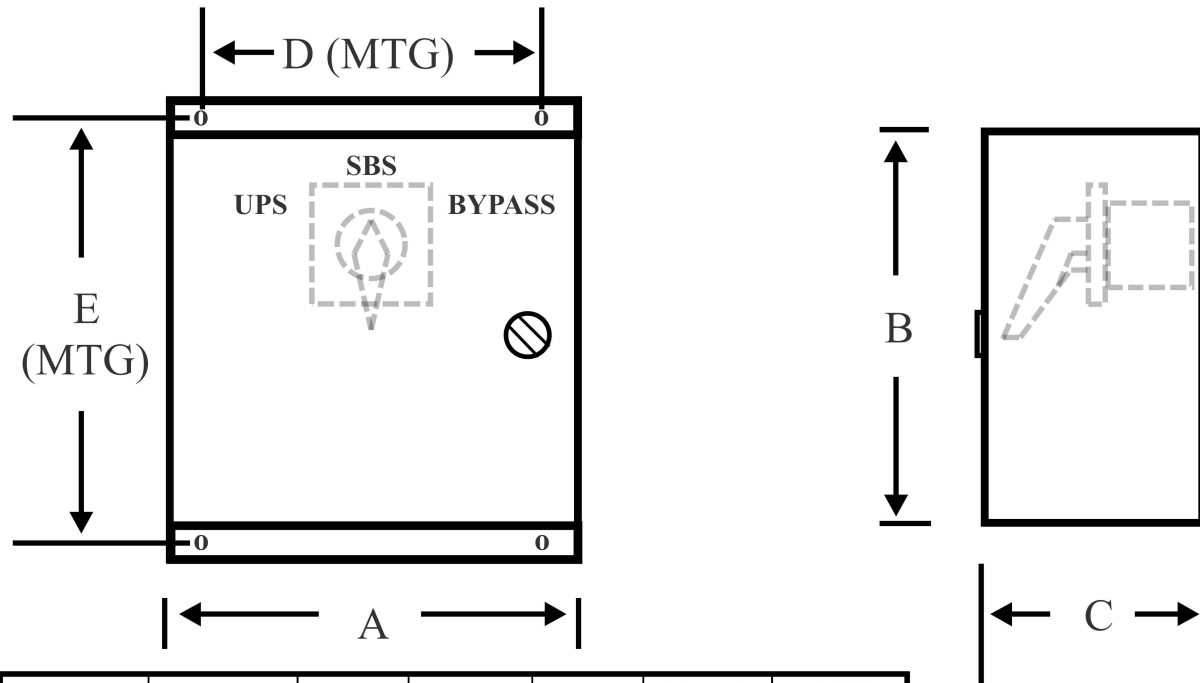
LONG LIFE BATTERY		
BATTERY	BATTERY CABINET QTY 90 MIN.	BATTERY CABINET QTY 120 MIN.
80KVA/64KW	2	3
100KVA/80KW	3	3
120KVA/96KW	3	4
160KVA/128KW	4	5

**NOTES:**

- 1) SPACING IS OPTIONAL NOT REQUIRED BY MFR.
- 2) CONSTRUCTION: NEMA1 INDOOR.
- 3) DIMENSIONS ARE IN INCHES.

WAVE RIDER 4 SHAKER TABLE TESTED BATTERY CABINET (51" WIDE)		SHT 1 OF 1	
<b>CRUCIAL POWER PRODUCTS</b> SUBJECT TO CHANGE WITHOUT NOTICE			
DRAWN : SHERRIS.	4/17/24	420-SV-TD-016	REV A
APPVD : HN	4/17/24		

# MAKE BEFORE BREAK EXTERNAL WRAP AROUND BY-PASS SWITCH



RATING	VOLTAGE	DIM A	DIM B	DIM C	DIM D (MTG)	DIM E (MTG)
350 AMPS	600V	30	36	16	28.5	34.5
240 AMPS	600V	30	30	12	28.5	28.5
175 AMPS	600V	20	20	12	18.5	18.5
110 AMPS	600V	14	16	10	12	16.75
55 AMPS	600V	14	16	8	12	16.75

## NOTES:

- 1) SWITCH CONTACTS ARE THREE PHASE L-NEUTRAL "MAKE BEFORE-BREAK"
- 2) CONTACTS MARKED "UPS" ARE CLOSED IN THE "UPS" POSITION
- 3) CONTACTS MARKED "BYPASS" ARE CLOSED IN THE "BYPASS" POSITION
- 4) CONTACTS MARKED "SBS" ARE CLOSED IN THE "SBS" POSITION
- 5) WRAP AROUND BY-PASS SWITCH IS FOR SAME INPUT/OUTPUT VOLTAGES ONLY
- 6) WRAP AROUND BY-PASS SWITCH CAN ONLY BE USED WITHOUT ANY BUILT-IN SECONDARY DISTRIBUTION CIRCUIT BREAKERS IN UPS

WAVE RIDER 3 / 4  
EXTERNAL WRAP AROUND BY-PASS SWITCH

SHT  
1 OF 1



CRUCIAL POWER PRODUCTS

SUBJECT TO CHANGE WITHOUT NOTICE

DRAWN : SS

4/17/24

APPVD: HN

4/17/24

415-TD-016

REV

A